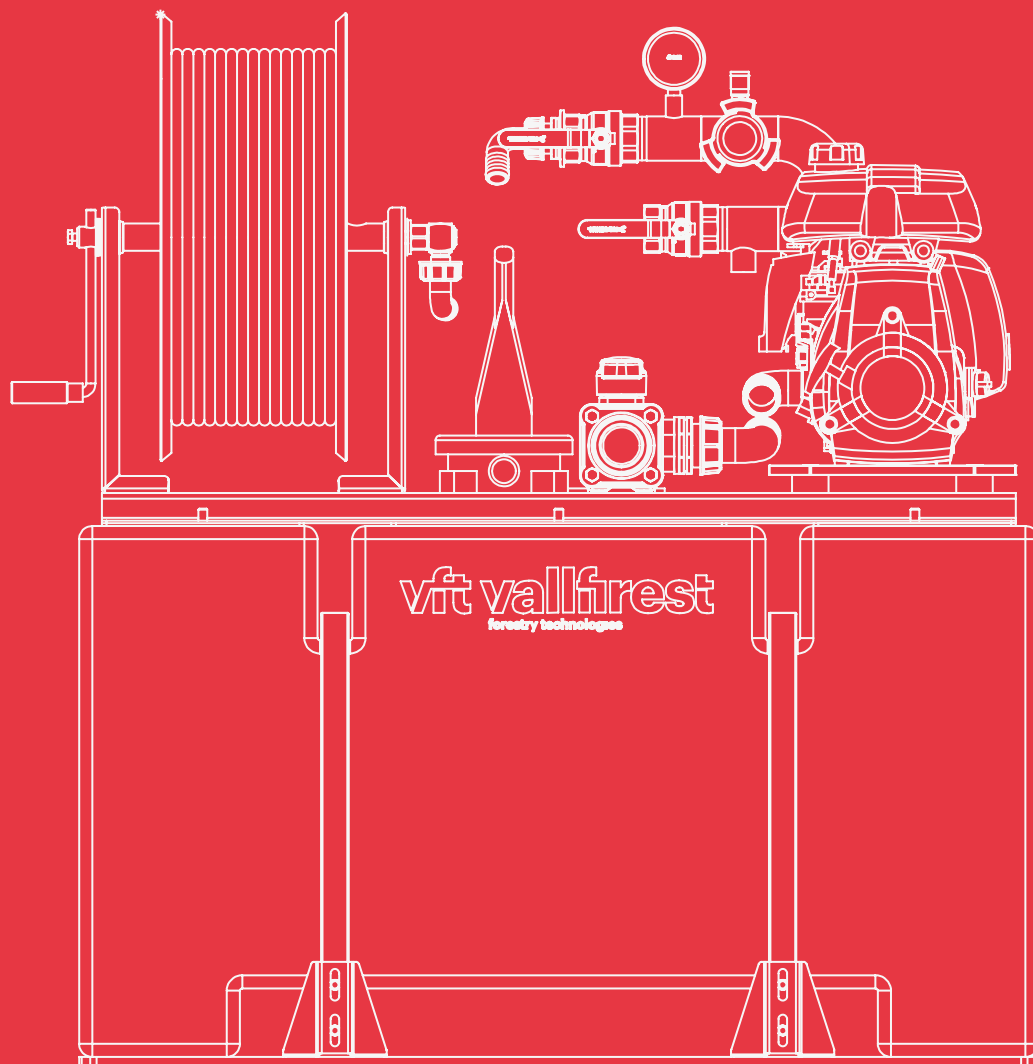


Skid unit with a centrifugal pump

Horizontal polyethylene tank
Low pressure



Polyethylene skid unit with a centrifugal pump

Low pressure | Up to 6.9 bar

Rapid intervention skid units designed for pickup vehicles and trailers, equipped with centrifugal pumps up to 6.9 bar with a maximum flow of up to 260 L/min.

- High-quality components and great replacement part availability
- Resistant tanks made of polyethylene
- The best quality/price ratio
- 2 year warranty



What is included?

Motor	Gasoline (2.1HP)
Centrifugal pump	260 l/min 6.9 bar
Quick attack winder	Mounted on the main structure
Water tank	400 L
Suction oversleeve	5 m long

Uses

Wildland fires	Recommended use
Container and vehicle fires	Recommended use
Cleaning and unclogging	Not recommended

1 Motor pump unit



Motor	Power*	Pump	Max. pressure**	Max. flow**
Honda GXH50	2,1 HP	VFT_1SP4	6,9 bar	260 l/min

Gasoline motor.

* The nominal engine power indicated in this document is the net power tested on a production engine for the engine model pursuant to SAE J1349 (HONDA) at a specific speed. This value may vary in mass produced motors. The actual output power of the engine installed on the end machine will vary depending on a number of factors such as the applicable engine operating speed, the environmental conditions, maintenance and other variables.

** These values are at direct pump outlet.

*** The power, pressure and flow values are valid in working conditions: temperature 25°C at sea level. **IMPORTANT:** Engine power will decrease 3.5% for every 300 meters above sea level and 1% for each 5.6°C above 25°C.

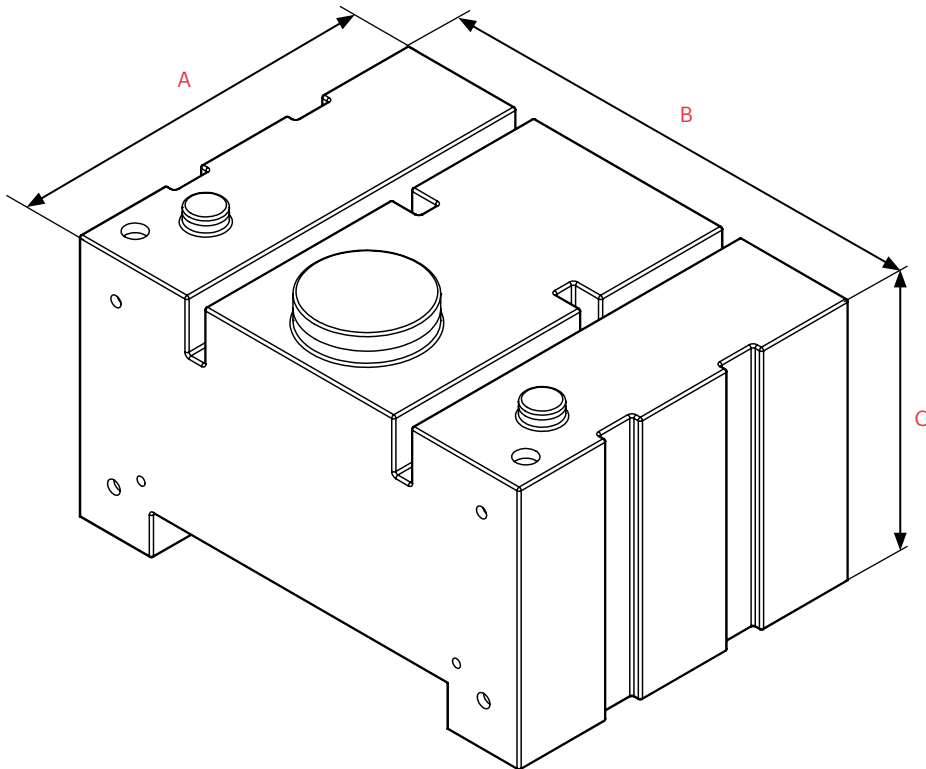


HONDA

2 Water tank

Polyethylene tanks make the entire skid unit lighter. Vallfirest skid units with a polyethylene tank are designed to concentrate the skid unit load in the area closest to the vehicle cabin, avoiding wheel arches on pickup vehicles and optimizing the available space.

- Made of seamless polyethylene via rotational molding.
- 1-1/2" filling spout on the top with couplings (Barcelona, Storz, DSP or others) to fill the tank from a hydrant or exterior pressurized water source.
- 1 configurable 1-1/2" high vent on the top.
- 1 threaded inspection cover with a useful diameter of 200 mm to inspect the tank.
- A water level indicator over connecting ducts.
- A 1" drain to empty the tank.
- Pump return connection to fill the tank by suctioning water from a non-pressurized external water source.



A: Depth
 B: Width
 C: Height

Standard colors	Tank dimensions			
White Red				
	Tank	A [mm]	B [mm]	C [mm]
	400 RH	790	1050	585

3 Components included

3.1 Winder

Made of anti-corrosive material with a manual starting crank and lock system.

TECHNICAL DATA

- Includes 20 m of DN25 semi-rigid hose.



3.2 Semi-rigid DN25 hose

Three-layer hose for low-pressure systems. Made of high-tenacity circularly woven 100% synthetic thread, completely protected and encapsulated with a mix of PVC and high-resistance synthetic nitrile rubber extruded through the fabric to form a single homogeneous structure without glue or adhesives.

TECHNICAL DATA

- Maximum pressure: 20 bar
- Standard length: 20 and 50 m bands
- Nominal diameter: 25 mm



3.3 Suction oversleeve

Clear flexible PVC spiral absorption oversleeve with rigid PVC spiral and smooth inner surface. Includes non-return foot valve and filter. Includes a Storz connector for connection to the Vallfirest skid unit.

TECHNICAL DATA

- Length: 5 m
- Oversleeve diameter: DN40 (1-1/2")
- Weight: 4 kg (DN40)



4 Optional accessories

4.1 Water nozzle

vft SG540 wildland nozzle with four adjustable flow rates. Compatible with proportioners. Good performance in extreme conditions, easy maintenance, resistant and long-lasting. Additional bleed-cleaning position.

TECHNICAL DATA

- Maximum pressure: 30 bar
- Adjustable flow 19/37/90/150 L/min.
- Weight: 1.25 kg
- Coupling: Barcelona / Storz / DSP / NH



4.2 Foam nozzle

Viper Foam 1560 low-expansion foam nozzle made of light aluminum. Anodized surface for greater durability. Rotating inlet easily adaptable to any connector.

TECHNICAL DATA

- Maximum pressure: 7 bar
- Maximum flow: 133 L/min.
- Coupling: Barcelona / Storz / DSP / NH



4.3 Thermoplastic nozzle tip

Highly robust thermoplastic nozzle tip - ideal for wildland use. Turning the nozzle tip shuts off the flow of water or changes the type of stream.

TECHNICAL DATA

- Direct close, solid stream and self-protection stream effects
- Fixed teeth
- Fixed flow
- 7 bar maximum pressure
- Reach: 22 m
- Weight: 300 g
- Coupling: Barcelona / Storz / DSP / NH / 1 1/2" BSP fixed thread



4.4 3-layer flat hose

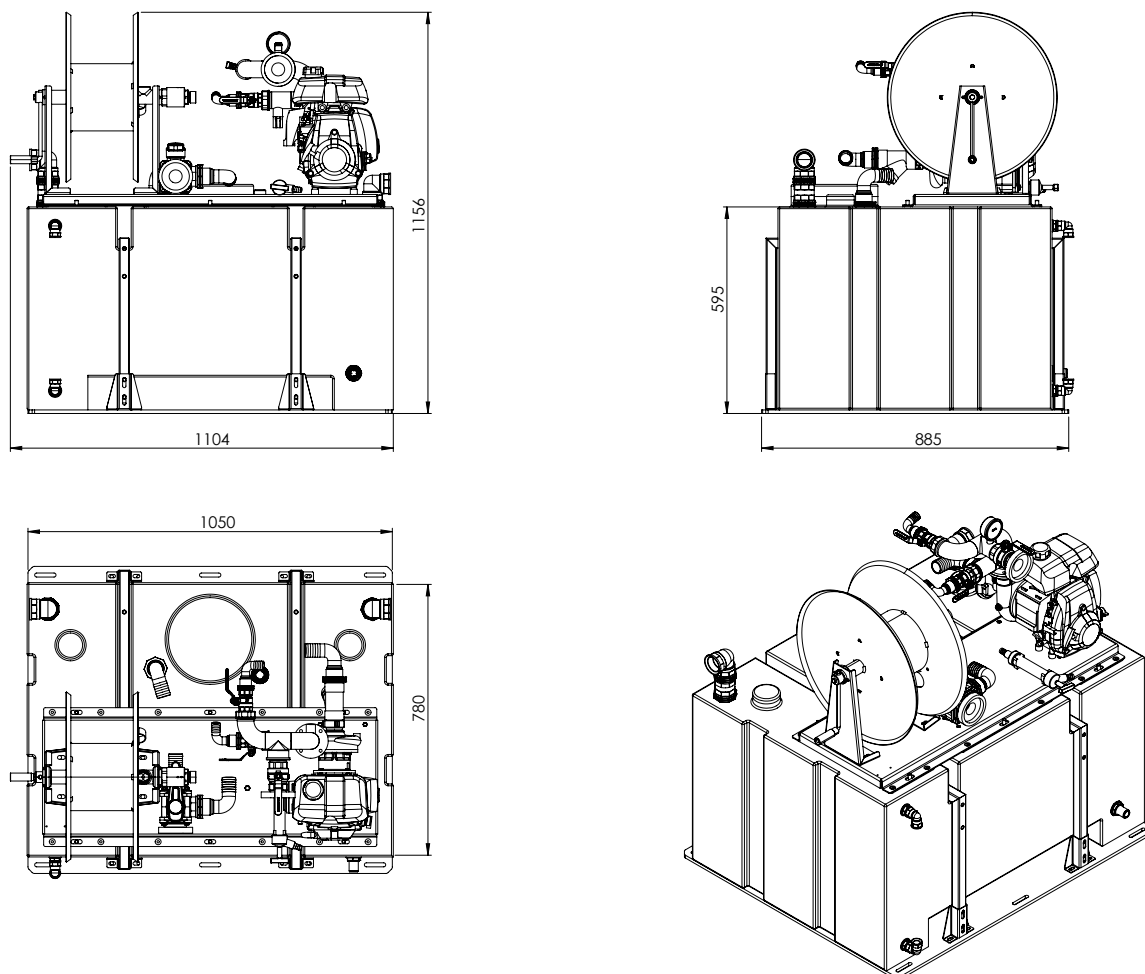
Three-layer hose for use under low pressure in two 20 m bands made of circular woven fabric, 100% high-tenacity thread, completely protected by a layer of synthetic rubber to create a homogeneous structure.

TECHNICAL DATA

- 40 bar maximum pressure
- 25 or 45 mm hose section
- Available with Storz, Barcelona, DSP or NH connector



5 General dimensions



6 Configurations available

Ref. VFT	Tank	Motor	Battery and electric start	Power *	Pump	** Max. pressure	** Max. flow	Approx dry weight
DVD134H-BH1A0	400 RH	Honda GXH50	NO	2.1 HP	VFT_1SP4	6.9 bar	260 l/min	105 kg

RH: horizontal polyethylene tank.

Gasoline motor.

* The nominal engine power indicated in this document is the net power tested on a production engine for the engine model pursuant to SAE J1349 (HONDA) at a specific speed. This value may vary in mass produced motors. The actual output power of the engine installed on the end machine will vary depending on a number of factors such as the applicable engine operating speed, the environmental conditions, maintenance and other variables.

** These values are at direct pump outlet.

*** The power, pressure and flow values are valid in working conditions: temperature 25°C at sea level. **IMPORTANT:** Engine power will decrease 3.5% for every 300 meters above sea level and 1% for each 5.6°C above 25°C.

Any questions? Contact us: clientes@vallfirest.com | T. +34 938 678 779